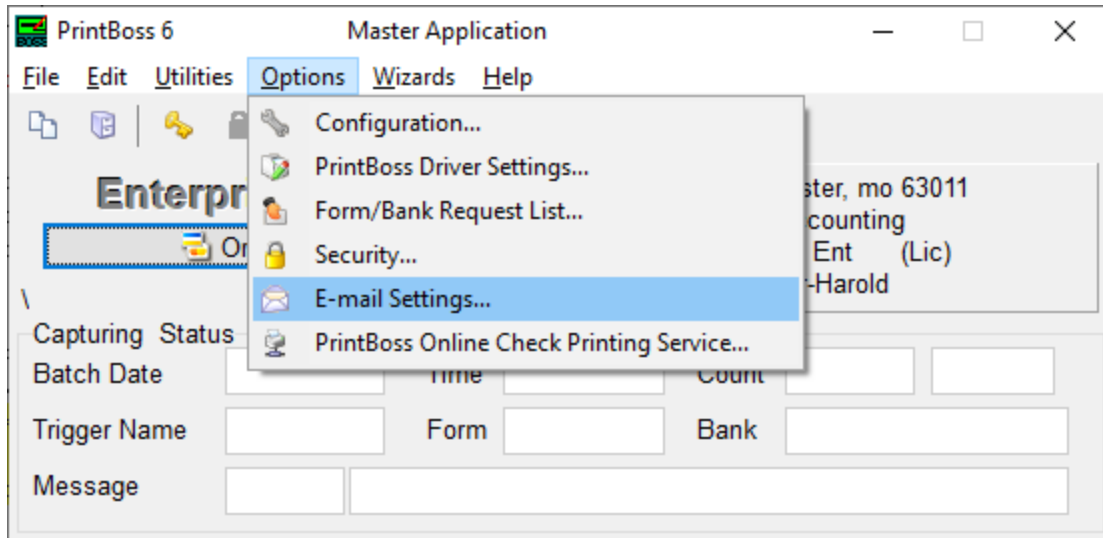


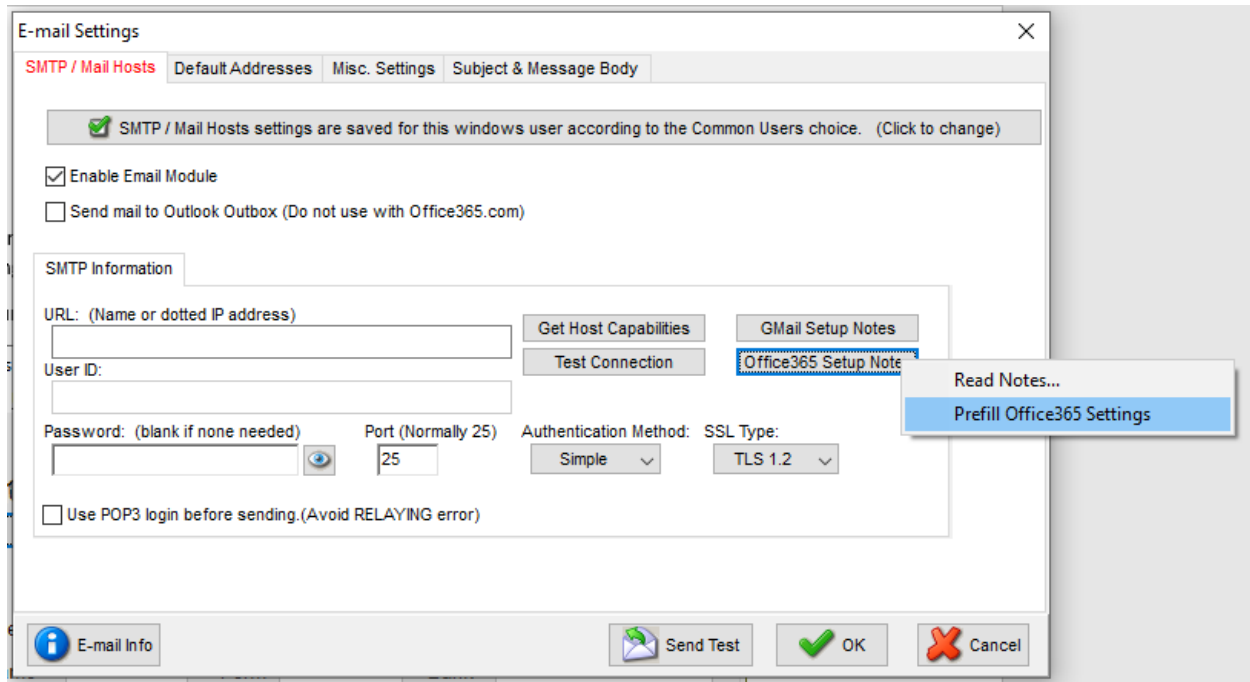
# Implementing OAuth2.0 in PrintBoss

To implement OAuth2 for Office 365 and Gmail you will need to have the Enterprise Edition of PrintBoss. The following screens will step you through turning on this feature.

Go in to your Email Settings screen.

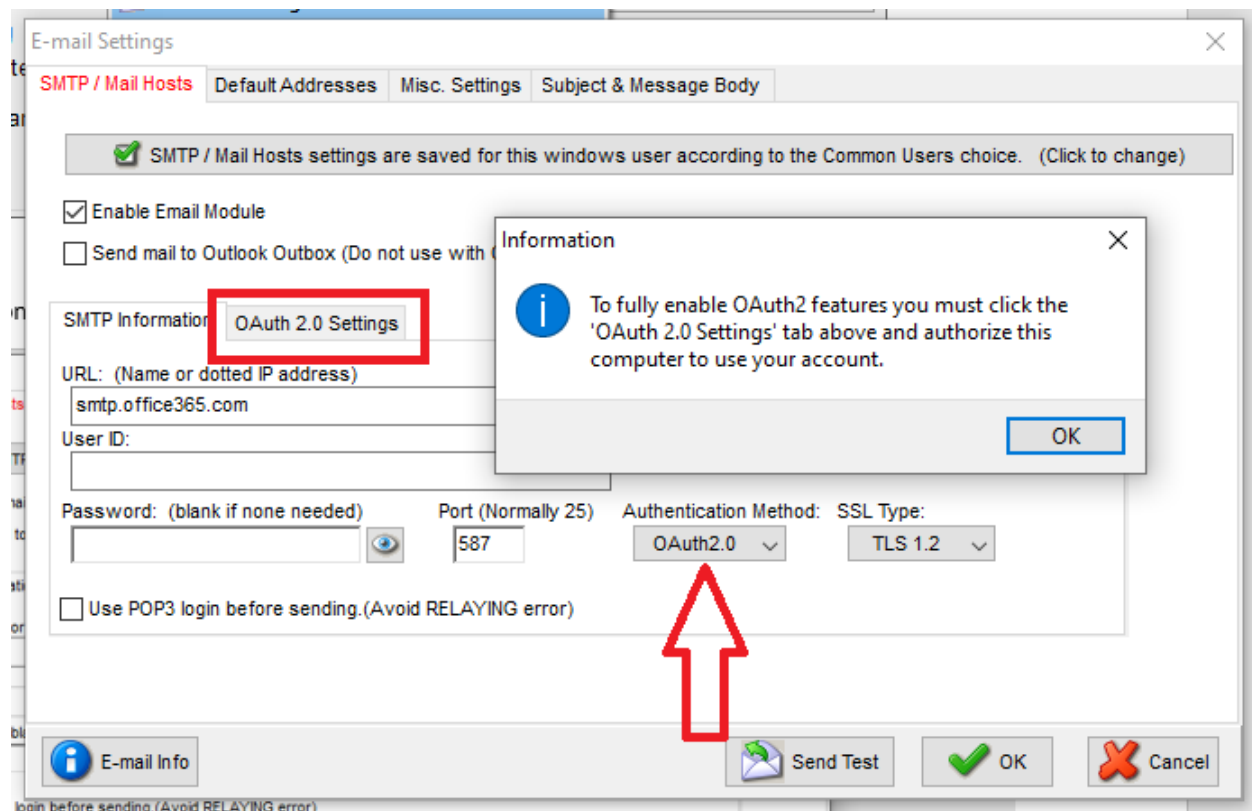


Next you will need to add your Office365 user ID in the **User ID** field followed by clicking on the **Office365 Setup Notes** Button and choose **Prefill Office365 Settings**.

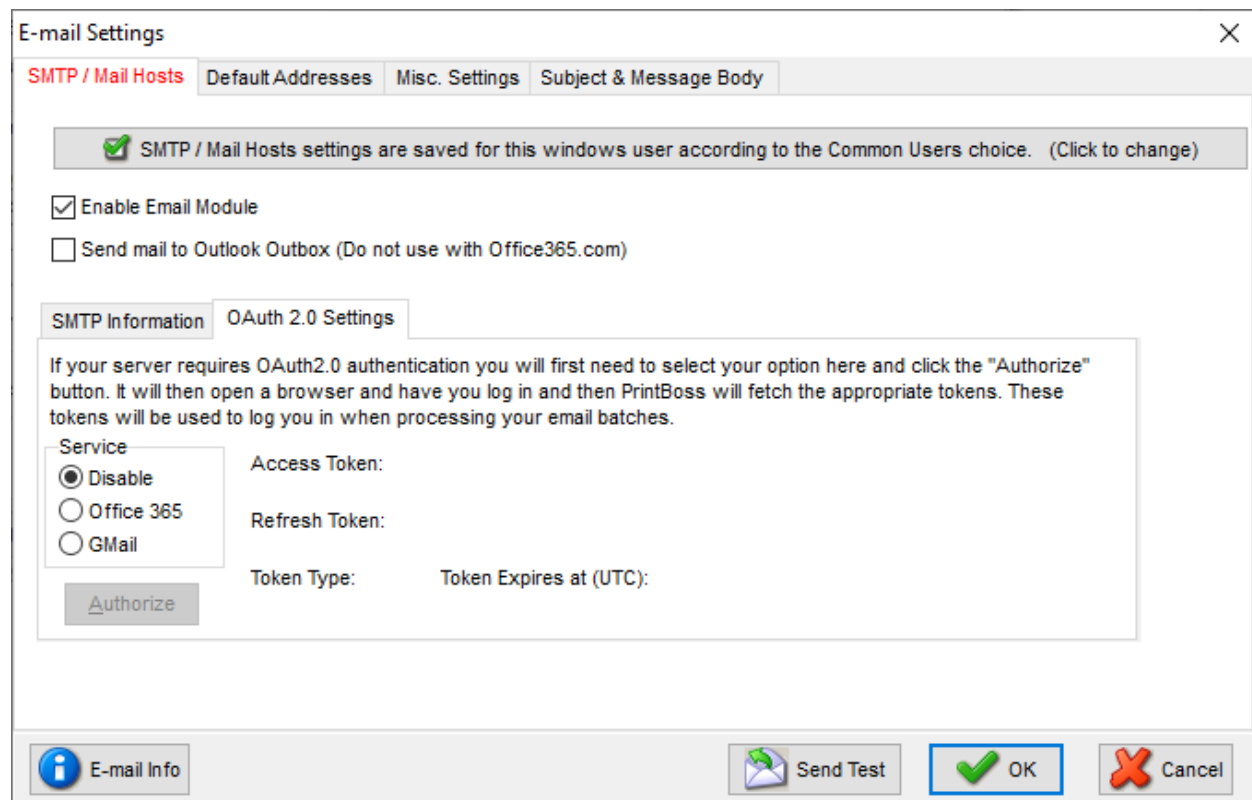


It will prefill various settings, one of which is the OAuth2.0 option as the Authentication Method. This will also toggle the OAuth 2.0 Settings tab, which you will automatically be directed to so that you can authorize PrintBoss to send emails on

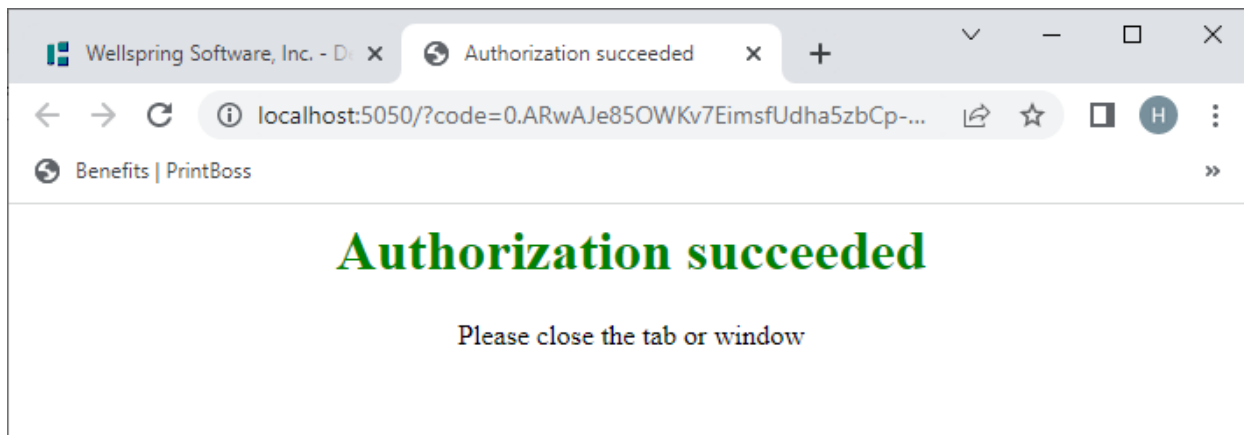
your behalf. If you choose Gmail, it will not automatically set this option since you can still use the default login methods. Click **OK** on the information dialog to continue.



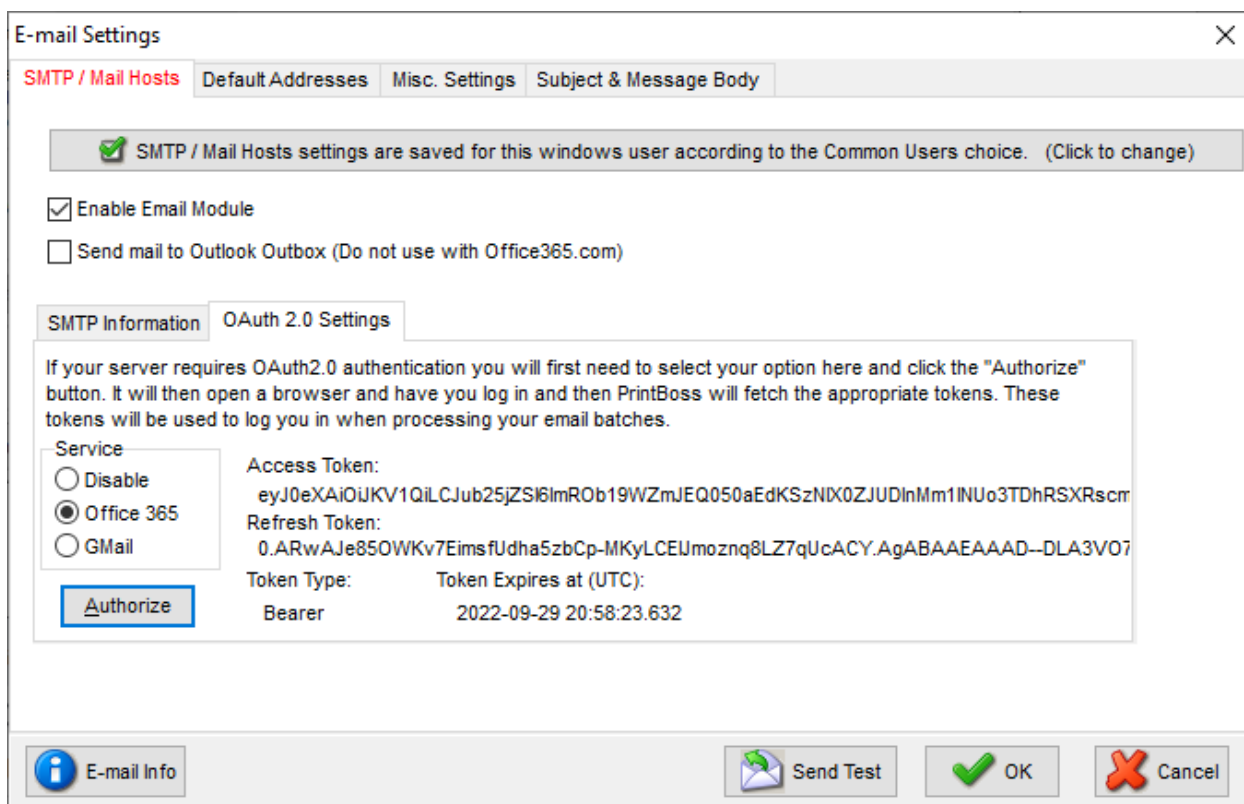
You will now need to select your service and click the **Authorize** button. If you haven't entered your User ID on the **SMTP Information** screen you will be instructed to do this before continuing.



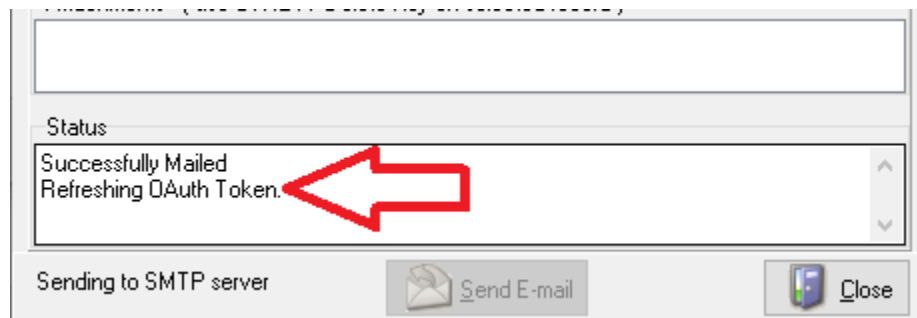
Once you click the **Authorize** button a browser window will open and you will then need to log in to your Office365/Gmail account. At the end of logging in you should see the screen below. Your company may have additional login requirements and you will need to get in contact with your IT department to navigate through those till you get this screen.



After you've finished logging in and allow PrintBoss to use your account you will see the tokens similar to what is shown below. You can now send a test or process emails directly from your work file. Click **OK** to save your new settings and tokens.



You will see that there is a **Token Expires** field on the settings screen. The OAuth system requires you to get new tokens periodically, that is what this time indicates. It is in UTC time so most likely will not match your local time. When you are sending emails you will see when it is refreshing the tokens by watching the **Status** at the bottom of the send dialog. Many users don't have this display so you may never know this is happening.



As of this writing the Gmail settings will work but we are waiting for Approval from Google to make them public. If you need this feature we can add you to our small test group and you can then use the OAuth features for Gmail.